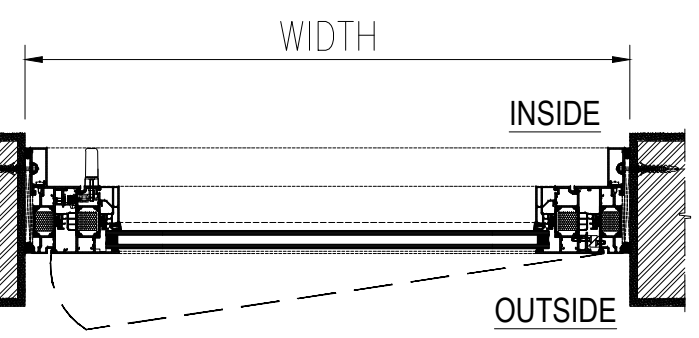


W1 ELEVATION: (VIEW OUTSIDE)
SCALE: 1:10

W1 SECTION:



W1 PLAN:

*GENERAL NOTES:
1. ALL DIMENSION AND LEVELS ARE IN FEET INCH.
2. ALL DIMENSIONS ARE TO BE READ NOT MEASURED.
3. ALL ELEVATIONS VIEWED AS PER SHOWN.

REFERENCE DRAWINGS:

—	—	—
—	—	—
—	—	—
—	—	—
—	—	—
—	—	—
—	—	—
—	—	—
—	—	—
—	—	—

DESIGN DRAWING NO. REV. NO. DATE:

FACADE CONSULTANT:
JOSEPH B. CALLAGHAN, INC.
1617 John F. Kennedy Blvd
Suite 1655
Philadelphia, PA 19103
T: 215.665.0497

ARCHITECT DESIGN CONSULTANT:
KSS ARCHITECTS
Princeton | Philadelphia
337 Witherspoon Street
Princeton, NJ 08542
T: 609.921.1131

PROJECT:
UNCOMMON SCHOOL
ADDITION AND RENOVATION
NORTH STAR ACADEMY-571 18TH AVENUE
571 18TH AVENUE, NEWARK, NJ 07103
LOT 1, BLOCKS 358-359

CLIENT:
—
—

ISSUE

—	—	—	—
—	—	—	—
—	—	—	—
—	—	—	—
—	—	—	—
—	—	—	—
—	—	—	—
—	—	—	—
—	—	—	—
—	—	—	—

NO.	DESCRIPTION:	DATE:	REV.BY

DISCIPLINE:

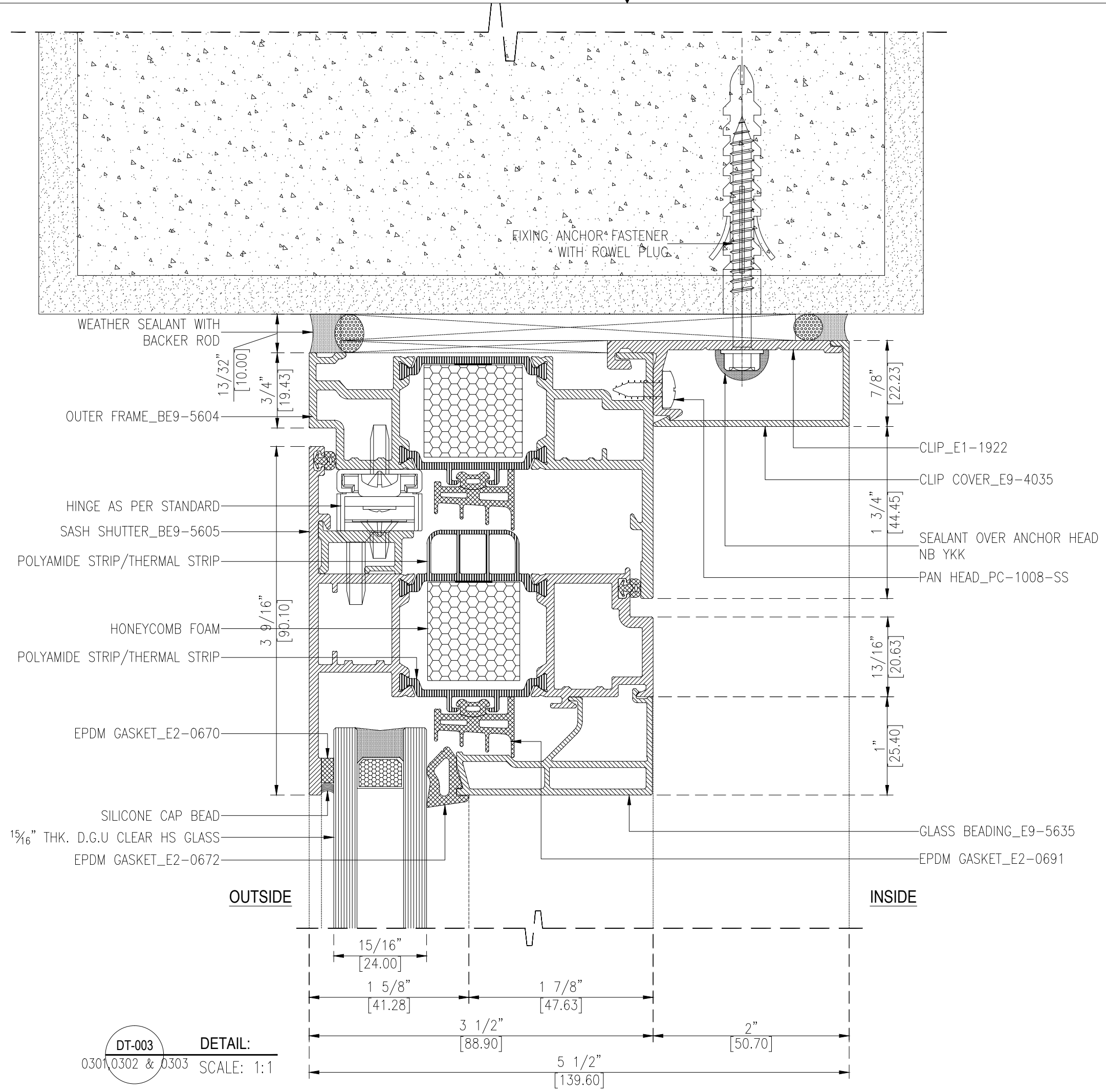
FACADE CONTRACTOR:
SIMSONA CORPORATION
2275 Research Boulevard
Suite 500
Rockville, MD 20850
Office: 301-774-0880
Cell: 301-408-8553, FAX: 301-260-0239
E-mail: raj@simsona.com

DRAWING TITLE:
**SHOP DRAWING OF
CASEMENT WINDOW (W1)**

DRAWN:	CHECKED:	APPROVED:	PAGE NO.	PR. CODE:	
DINESH	RAJ.G	RAJ.G	001	22308	
DATE:	DATE:	DATE:	SHEET NO.	SCALE:	SIZE:
10 Dec,19	—	—	1 OF 29	AS SHOWN	A3

DRAWING NUMBER:
UNC/SCH-SIMSONA-AL-DWG-DW-0301

STATUS: SAMPLE DRAWING



*GENERAL NOTES:
 1. ALL DIMENSION AND LEVELS ARE IN FEET INCH.
 2. ALL DIMENSIONS ARE TO BE READ NOT MEASURED.
 3. ALL ELEVATIONS VIEWED AS PER SHOWN.

REFERENCE DRAWINGS:

---	---	---
---	---	---
---	---	---
---	---	---
---	---	---
---	---	---

DESIGN DRAWING NO. REV. NO. DATE:

FACADE CONSULTANT:
JOSEPH B. CALLAGHAN, INC.
 1617 John F. Kennedy Blvd
 Suite 1655
 Philadelphia, PA 19103
 T: 215.665.0497

ARCHITECT DESIGN CONSULTANT:
KSS ARCHITECTS
 Princeton | Philadelphia
 337 Witherspoon Street
 Princeton, NJ 08542
 T: 609.921.1131

PROJECT:
UNCOMMON SCHOOL
 ADDITION AND RENOVATION
 NORTH STAR ACADEMY-571 18TH AVENUE
 571 18TH AVENUE, NEWARK, NJ 07103
 LOT 1, BLOCKS 358-359

CLIENT:
 -
 -

ISSUE

---	---	---	---
---	---	---	---
---	---	---	---
---	---	---	---
---	---	---	---
---	---	---	---
---	---	---	---
---	---	---	---
---	---	---	---
---	---	---	---

NO. DESCRIPTION: DATE: REV.BY

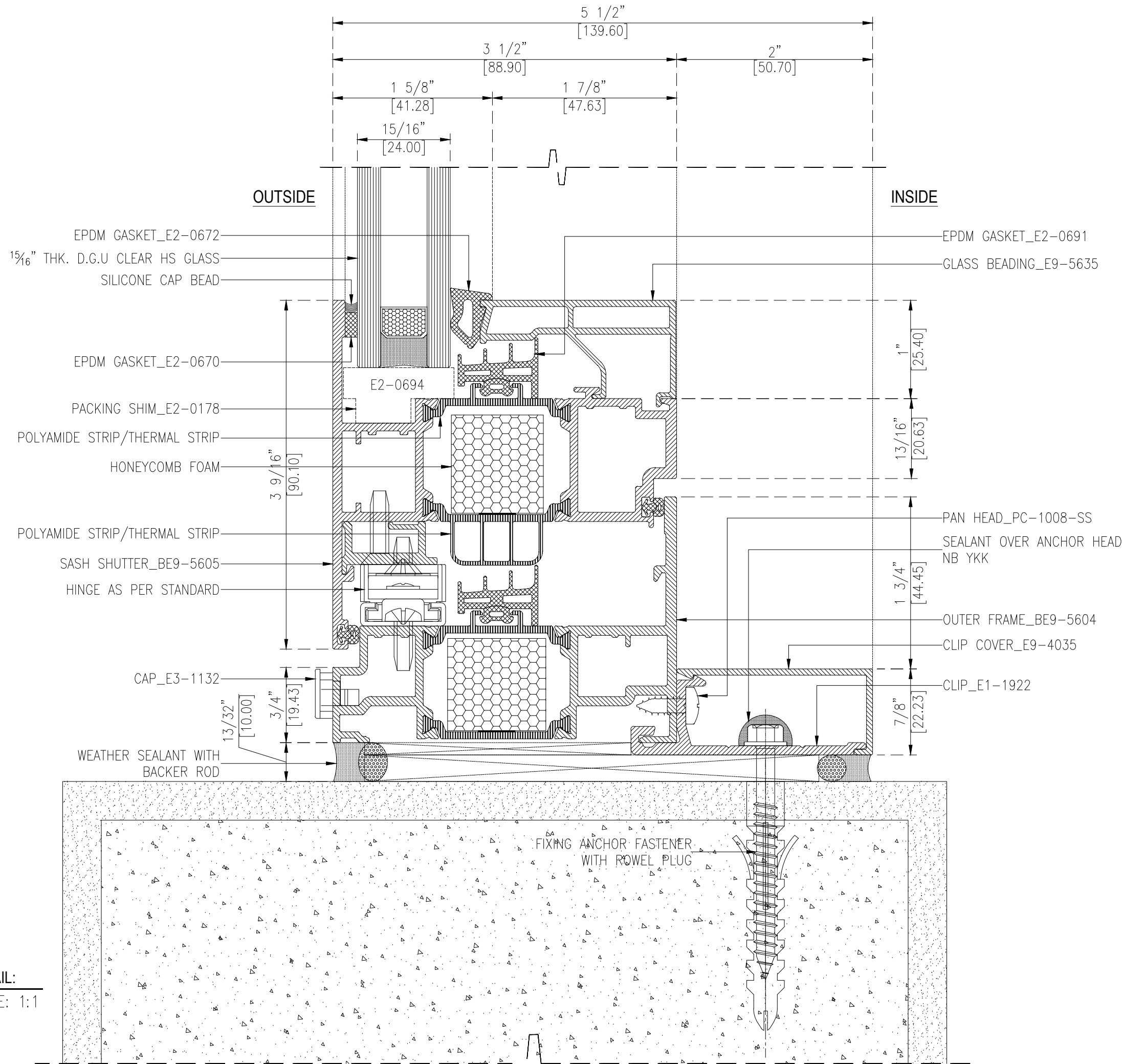
DISCIPLINE:

FACADE CONTRACTOR:
 **SIMSONA CORPORATION**
 2275 Research Boulevard
 Suite 500
 Rockville, MD 20850
 Office: 301-774-0880
 Cell: 301-408-8553, FAX: 301-260-0239
 E-mail: raj@simsona.com

DRAWING TITLE:
DETAIL-003

DRAWN:	CHECKED:	APPROVED:	PAGE NO.	PR. CODE:	
DINESH	RAJ.G	RAJ.G	010	22308	
DATE:	DATE:	DATE:	SHEET NO.	SCALE:	SIZE:
10 Dec,19	-	-	10 OF 29	AS SHOWN	A3
DRAWING NUMBER:				REV:	
UNC/SCH-SIMSONA-AL-DWG-DT-0403				00	
STATUS: SAMPLE DRAWING					

DT-003 **DETAIL:**
 0301, 0302 & 0303 **SCALE: 1:1**



*GENERAL NOTES:
 1. ALL DIMENSION AND LEVELS ARE IN FEET INCH.
 2. ALL DIMENSIONS ARE TO BE READ NOT MEASURED.
 3. ALL ELEVATIONS VIEWED AS PER SHOWN.

REFERENCE DRAWINGS:

—	—	—
—	—	—
—	—	—
—	—	—
—	—	—
—	—	—
—	—	—
—	—	—
—	—	—
—	—	—

DESIGN DRAWING NO. REV. NO. DATE:

FACADE CONSULTANT:
JOSEPH B. CALLAGHAN, INC.
 1617 John F. Kennedy Blvd
 Suite 1655
 Philadelphia, PA 19103
 T: 215.665.0497

ARCHITECT DESIGN CONSULTANT:
KSS ARCHITECTS
 Princeton | Philadelphia
 337 Witherspoon Street
 Princeton, NJ 08542
 T: 609.921.1131

PROJECT:
UNCOMMON SCHOOL
 ADDITION AND RENOVATION
 NORTH STAR ACADEMY-571 18TH AVENUE
 571 18TH AVENUE, NEWARK, NJ 07103
 LOT 1, BLOCKS 358-359

CLIENT:
 —

ISSUE

—	—	—
—	—	—
—	—	—
—	—	—
—	—	—
—	—	—
—	—	—
—	—	—
—	—	—
—	—	—

NO.	DESCRIPTION:	DATE:	REV. BY

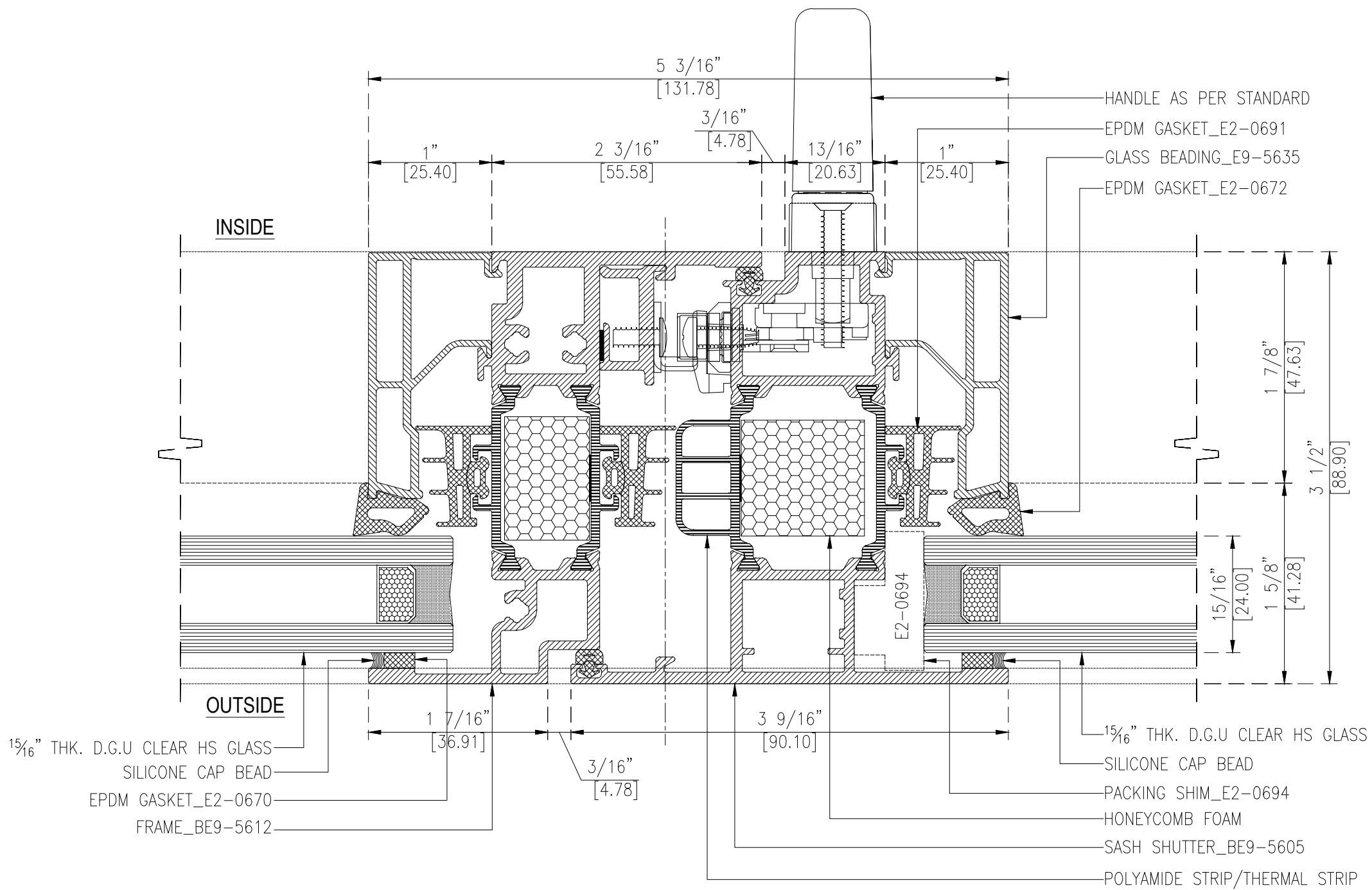
DISCIPLINE:

FACADE CONTRACTOR:
 **SIMSONA CORPORATION**
 2275 Research Boulevard
 Suite 500
 Rockville, MD 20850
 Office: 301-774-0880
 Cell: 301-408-8553, FAX: 301-260-0239
 E-mail: raj@simsona.com

DRAWING TITLE:
DETAIL-004

DRAWN:	CHECKED:	APPROVED:	PAGE NO.	PR. CODE:	
DINESH	RAJ.G	RAJ.G	011	22308	
DATE:	DATE:	DATE:	SHEET NO.	SCALE:	SIZE:
10 Dec,19	—	—	11 OF 29	AS SHOWN	A3
DRAWING NUMBER:					REV:
UNC/SCH-SIMSONA-AL-DWG-DT-0404					00
STATUS: SAMPLE DRAWING					

DT-004 **DETAIL:**
 0301,0302 & 0305 **SCALE: 1:1**



15/16" THK. D.G.U. CLEAR HS GLASS
 SILICONE CAP BEAD
 EPDM GASKET_E2-0670
 FRAME_BE9-5612

HANDLE AS PER STANDARD
 EPDM GASKET_E2-0691
 GLASS BEADING_E9-5635
 EPDM GASKET_E2-0672
 15/16" THK. D.G.U. CLEAR HS GLASS
 SILICONE CAP BEAD
 PACKING SHIM_E2-0694
 HONEYCOMB FOAM
 SASH SHUTTER_BE9-5605
 POLYAMIDE STRIP/THERMAL STRIP

DT-007 DETAIL:
 0303 SCALE: 1:1

*GENERAL NOTES:
 1. ALL DIMENSION AND LEVELS ARE IN FEET INCH.
 2. ALL DIMENSIONS ARE TO BE READ NOT MEASURED.
 3. ALL ELEVATIONS VIEWED AS PER SHOWN.

REFERENCE DRAWINGS:

---	---	---
---	---	---
---	---	---
---	---	---
---	---	---
---	---	---
---	---	---
---	---	---
---	---	---
---	---	---

DESIGN DRAWING NO. REV. NO. DATE:

FACADE CONSULTANT:
JOSEPH B. CALLAGHAN, INC.
 1617 John F. Kennedy Blvd
 Suite 1655
 Philadelphia, PA 19103
 T: 215.665.0497

ARCHITECT DESIGN CONSULTANT:
KSS ARCHITECTS
 Princeton | Philadelphia
 337 Witherspoon Street
 Princeton, NJ 08542
 T: 609.921.1131

PROJECT:
UNCOMMON SCHOOL
 ADDITION AND RENOVATION
 NORTH STAR ACADEMY-571 18TH AVENUE
 571 18TH AVENUE, NEWARK, NJ 07103
 LOT 1, BLOCKS 358-359

CLIENT:
 -
 -

ISSUE

---	---	---	---
---	---	---	---
---	---	---	---
---	---	---	---
---	---	---	---
---	---	---	---
---	---	---	---
---	---	---	---
---	---	---	---
---	---	---	---

NO. DESCRIPTION: DATE: REV.BY

DISCIPLINE:

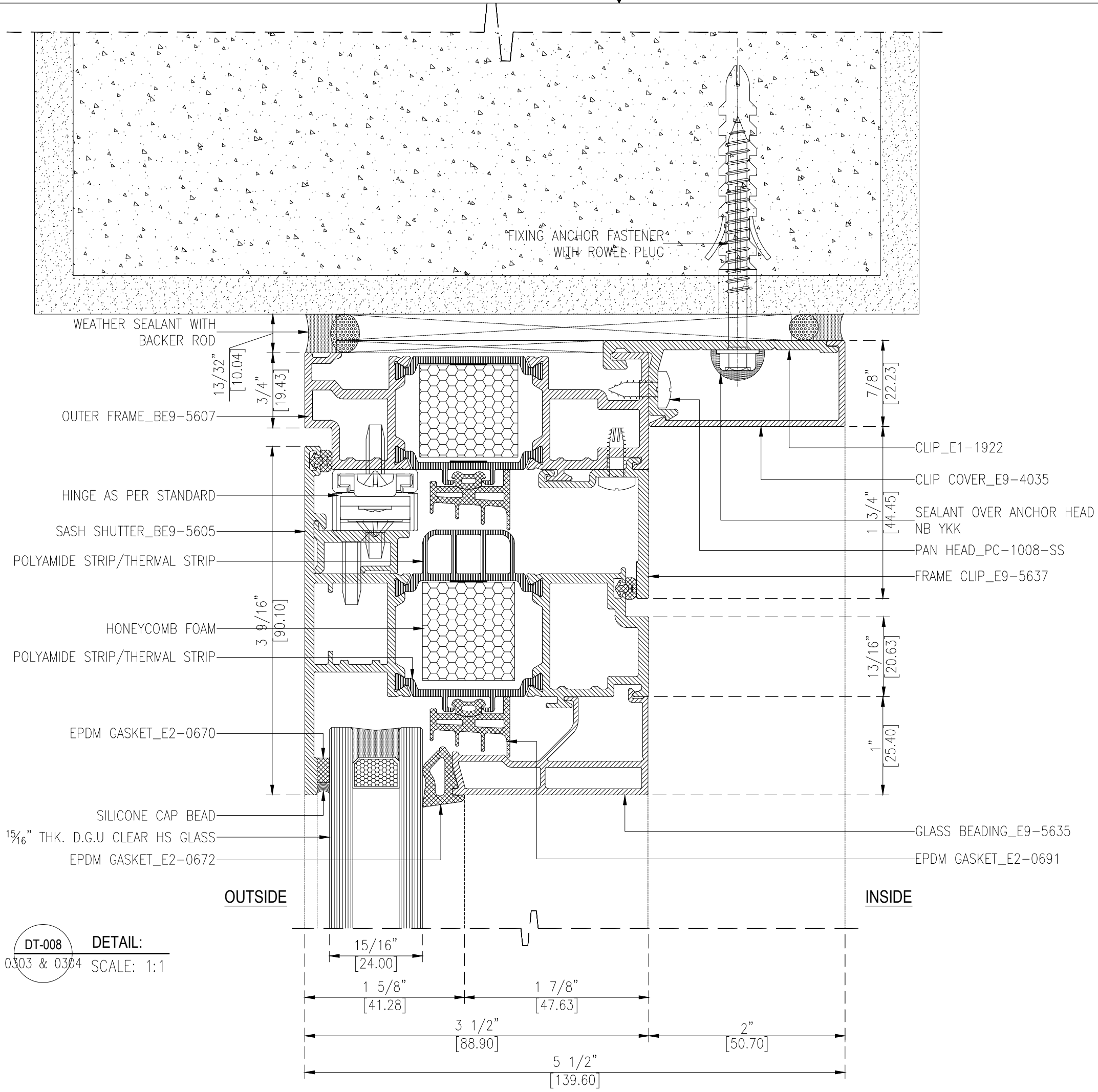
FACADE CONTRACTOR:
 **SIMSONA CORPORATION**
 2275 Research Boulevard
 Suite 500
 Rockville, MD 20850
 Office: 301-774-0880
 Cell: 301-408-8553, FAX: 301-260-0239
 E-mail: raj@simsona.com

DRAWING TITLE:
DETAIL-007

DRAWN:	CHECKED:	APPROVED:	PAGE NO.	PR. CODE:	
DINESH	RAJ.G	RAJ.G	014	22308	
DATE:	DATE:	DATE:	SHEET NO.	SCALE:	SIZE:
10 Dec,19	-	-	14 OF 29	AS SHOWN	A3

DRAWING NUMBER:
UNC/SCH-SIMSONA-AL-DWG-DT-0407 REV: **00**

STATUS: SAMPLE DRAWING



DT-008
0303 & 0304
DETAIL:
SCALE: 1:1

*GENERAL NOTES:
1. ALL DIMENSION AND LEVELS ARE IN FEET INCH.
2. ALL DIMENSIONS ARE TO BE READ NOT MEASURED.
3. ALL ELEVATIONS VIEWED AS PER SHOWN.

REFERENCE DRAWINGS:

DESIGN DRAWING NO. REV. NO. DATE:

FACADE CONSULTANT:
JOSEPH B. CALLAGHAN, INC.
1617 John F. Kennedy Blvd
Suite 1655
Philadelphia, PA 19103
T: 215.665.0497

ARCHITECT DESIGN CONSULTANT:
KSS ARCHITECTS
Princeton | Philadelphia
337 Witherspoon Street
Princeton, NJ 08542
T: 609.921.1131

PROJECT:
UNCOMMON SCHOOL
ADDITION AND RENOVATION
NORTH STAR ACADEMY-571 18TH AVENUE
571 18TH AVENUE, NEWARK, NJ 07103
LOT 1, BLOCKS 358-359

CLIENT:
-

ISSUE

NO.	DESCRIPTION:	DATE:	REV.BY

DISCIPLINE:

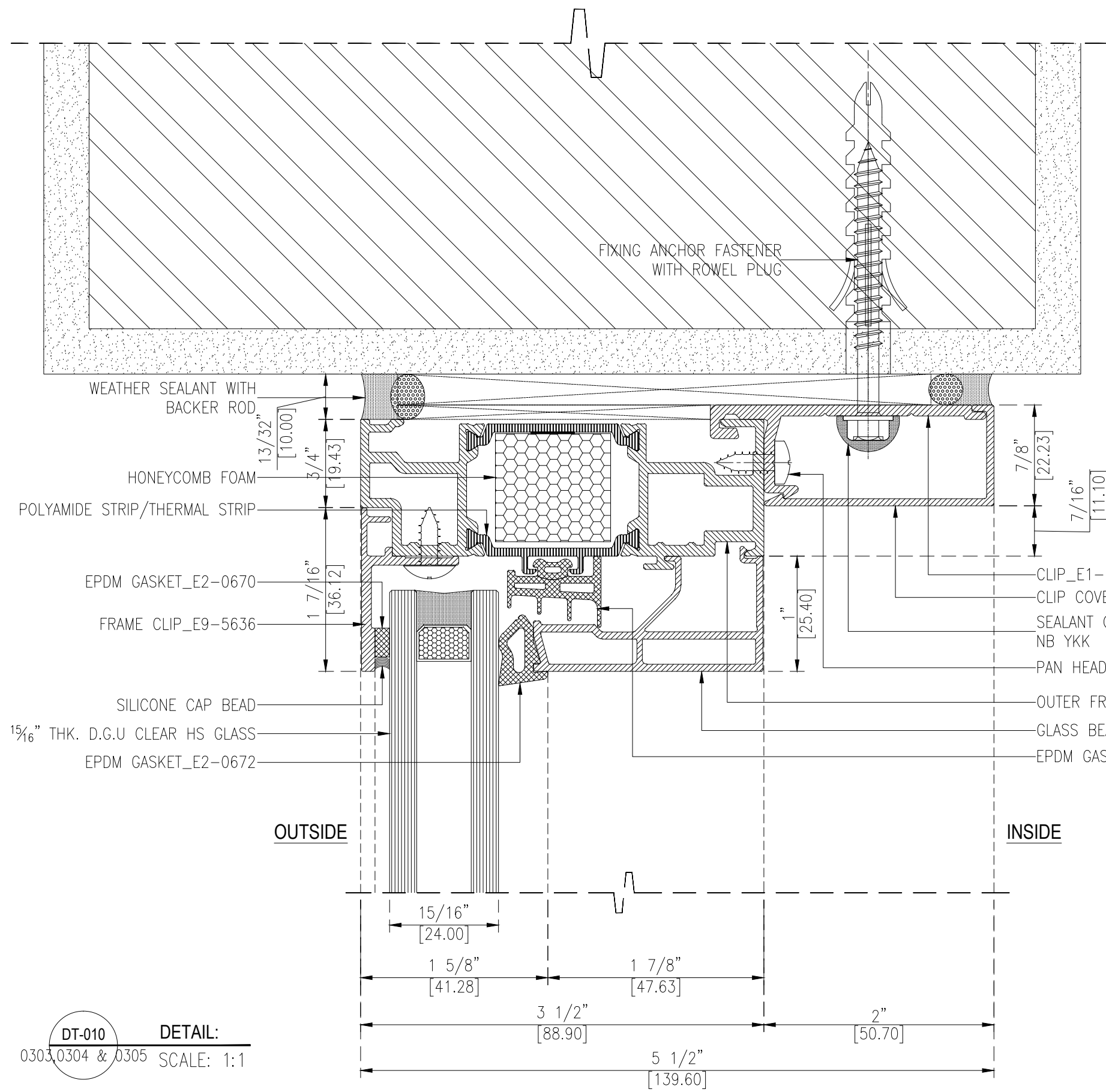
FACADE CONTRACTOR:
SIMSONA CORPORATION
2275 Research Boulevard
Suite 500
Rockville, MD 20850
Office: 301-774-0880
Cell: 301-408-8553, FAX: 301-260-0239
E-mail: raj@simsona.com

DRAWING TITLE:
DETAIL-008

DRAWN:	CHECKED:	APPROVED:	PAGE NO.	PR. CODE:	
DINESH	RAJ.G	RAJ.G	015	22308	
DATE:	DATE:	DATE:	SHEET NO.	SCALE:	SIZE:
10 Dec,19	-	-	15 OF 29	AS SHOWN	A3

DRAWING NUMBER:
UNC/SCH-SIMSONA-AL-DWG-DT-0408

STATUS: SAMPLE DRAWING



DT-010
0303, 0304 & 0305
DETAIL:
SCALE: 1:1

*GENERAL NOTES:
1. ALL DIMENSION AND LEVELS ARE IN FEET INCH.
2. ALL DIMENSIONS ARE TO BE READ NOT MEASURED.
3. ALL ELEVATIONS VIEWED AS PER SHOWN.

REFERENCE DRAWINGS:

---	---	---
---	---	---
---	---	---
---	---	---
---	---	---
---	---	---
---	---	---
---	---	---

DESIGN DRAWING NO. REV. NO. DATE:

FACADE CONSULTANT:
JOSEPH B. CALLAGHAN, INC.
1617 John F. Kennedy Blvd
Suite 1655
Philadelphia, PA 19103
T: 215.665.0497

ARCHITECT DESIGN CONSULTANT:
KSS ARCHITECTS
Princeton | Philadelphia
337 Witherspoon Street
Princeton, NJ 08542
T: 609.921.1131

PROJECT:
UNCOMMON SCHOOL
ADDITION AND RENOVATION
NORTH STAR ACADEMY-571 18TH AVENUE
571 18TH AVENUE, NEWARK, NJ 07103
LOT 1, BLOCKS 358-359

CLIENT:

ISSUE

---	---	---
---	---	---
---	---	---
---	---	---
---	---	---
---	---	---
---	---	---
---	---	---
---	---	---

NO.	DESCRIPTION:	DATE:	REV. BY
---	---	---	---
---	---	---	---
---	---	---	---
---	---	---	---
---	---	---	---
---	---	---	---
---	---	---	---

DISCIPLINE:

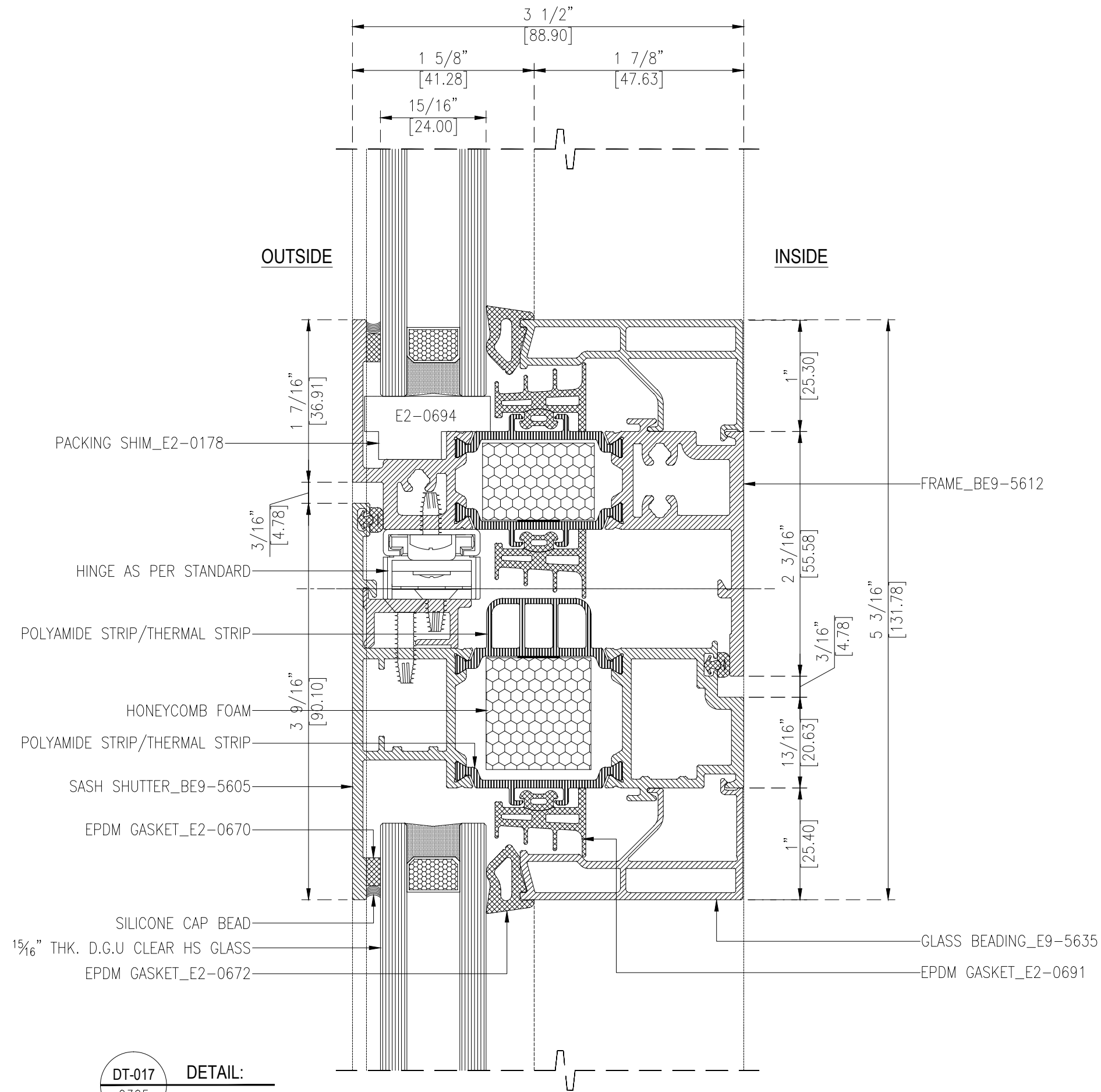
FACADE CONTRACTOR:
SIMSONA CORPORATION
2275 Research Boulevard
Suite 500
Rockville, MD 20850
Office: 301-774-0880
Cell: 301-408-8553, FAX: 301-260-0239
E-mail: raj@simsona.com

DRAWING TITLE:
DETAIL-010

DRAWN:	CHECKED:	APPROVED:	PAGE NO.	PR. CODE:	
DINESH	RAJ.G	RAJ.G	017	22308	
DATE:	DATE:	DATE:	SHEET NO.	SCALE:	SIZE:
10 Dec, 19	-	-	17 OF 29	AS SHOWN	A3

DRAWING NUMBER:
UNC/SCH-SIMSONA-AL-DWG-DT-0410

STATUS: SAMPLE DRAWING



DT-017
0305

DETAIL:
SCALE: 1:1

*GENERAL NOTES:
 1. ALL DIMENSION AND LEVELS ARE IN FEET INCH.
 2. ALL DIMENSIONS ARE TO BE READ NOT MEASURED.
 3. ALL ELEVATIONS VIEWED AS PER SHOWN.

REFERENCE DRAWINGS:

DESIGN DRAWING NO. REV. NO. DATE:

FACADE CONSULTANT:
JOSEPH B. CALLAGHAN, INC.
 1617 John F. Kennedy Blvd
 Suite 1655
 Philadelphia, PA 19103
 T: 215.665.0497

ARCHITECT DESIGN CONSULTANT:
KSS ARCHITECTS
 Princeton | Philadelphia
 337 Witherspoon Street
 Princeton, NJ 08542
 T: 609.921.1131

PROJECT:
UNCOMMON SCHOOL
 ADDITION AND RENOVATION
 NORTH STAR ACADEMY-571 18TH AVENUE
 571 18TH AVENUE, NEWARK, NJ 07103
 LOT 1, BLOCKS 358-359

CLIENT:
 -
 -

ISSUE

NO.	DESCRIPTION:	DATE:	REV. BY

DISCIPLINE:

FACADE CONTRACTOR:
 **SIMSONA CORPORATION**
 2275 Research Boulevard
 Suite 500
 Rockville, MD 20850
 Office: 301-774-0880
 Cell: 301-408-8553, FAX: 301-260-0239
 E-mail: raj@simsona.com

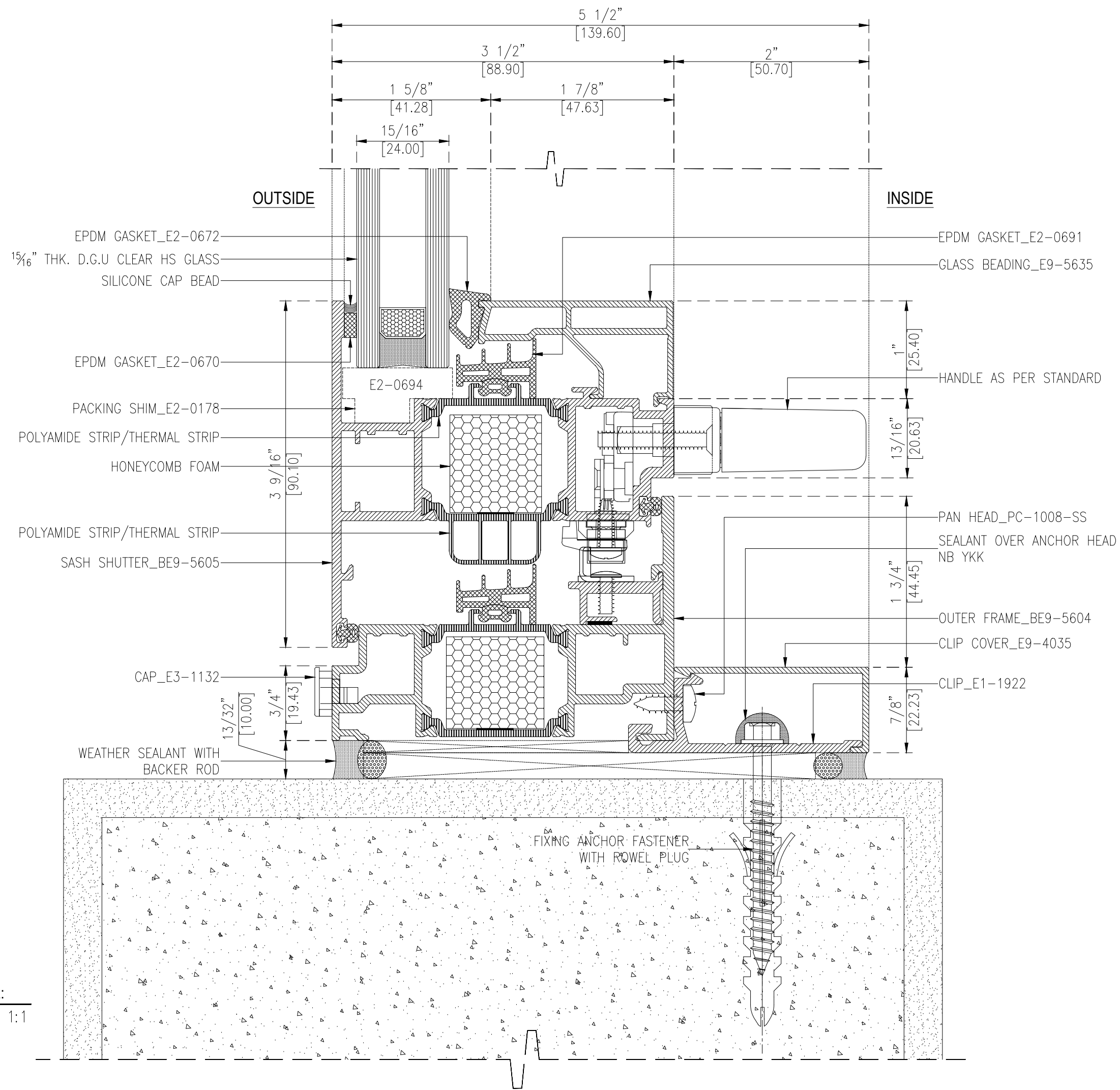
DRAWING TITLE:
DETAIL-017

DRAWN:	CHECKED:	APPROVED:	PAGE NO.	PR. CODE:	
DINESH	RAJ.G	RAJ.G	024	22308	
DATE:	DATE:	DATE:	SHEET NO.	SCALE:	SIZE:
10 Dec,19	-	-	24 OF 29	AS SHOWN	A3

DRAWING NUMBER:
UNC/SCH-SIMSONA-AL-DWG-DT-0417

REV:
00

STATUS: SAMPLE DRAWING



*GENERAL NOTES:
 1. ALL DIMENSION AND LEVELS ARE IN FEET INCH.
 2. ALL DIMENSIONS ARE TO BE READ NOT MEASURED.
 3. ALL ELEVATIONS VIEWED AS PER SHOWN.

REFERENCE DRAWINGS:

_____	_____	_____
_____	_____	_____
_____	_____	_____
_____	_____	_____
_____	_____	_____
_____	_____	_____

DESIGN DRAWING NO. _____ REV. NO. _____ DATE: _____

FACADE CONSULTANT:
JOSEPH B. CALLAGHAN, INC.
 1617 John F. Kennedy Blvd
 Suite 1655
 Philadelphia, PA 19103
 T: 215.665.0497

ARCHITECT DESIGN CONSULTANT:
KSS ARCHITECTS
 Princeton | Philadelphia
 337 Witherspoon Street
 Princeton, NJ 08542
 T: 609.921.1131

PROJECT:
UNCOMMON SCHOOL
 ADDITION AND RENOVATION
 NORTH STAR ACADEMY-571 18TH AVENUE
 571 18TH AVENUE, NEWARK, NJ 07103
 LOT 1, BLOCKS 358-359

CLIENT:

ISSUE

_____	_____	_____
_____	_____	_____
_____	_____	_____
_____	_____	_____
_____	_____	_____
_____	_____	_____
_____	_____	_____
_____	_____	_____
_____	_____	_____
_____	_____	_____

NO. _____ DESCRIPTION: _____ DATE: _____ REV. BY _____

DISCIPLINE:

FACADE CONTRACTOR:
 **SIMSONA CORPORATION**
 2275 Research Boulevard
 Suite 500
 Rockville, MD 20850
 Office: 301-774-0880
 Cell: 301-408-8553, FAX: 301-260-0239
 E-mail: raj@simsona.com

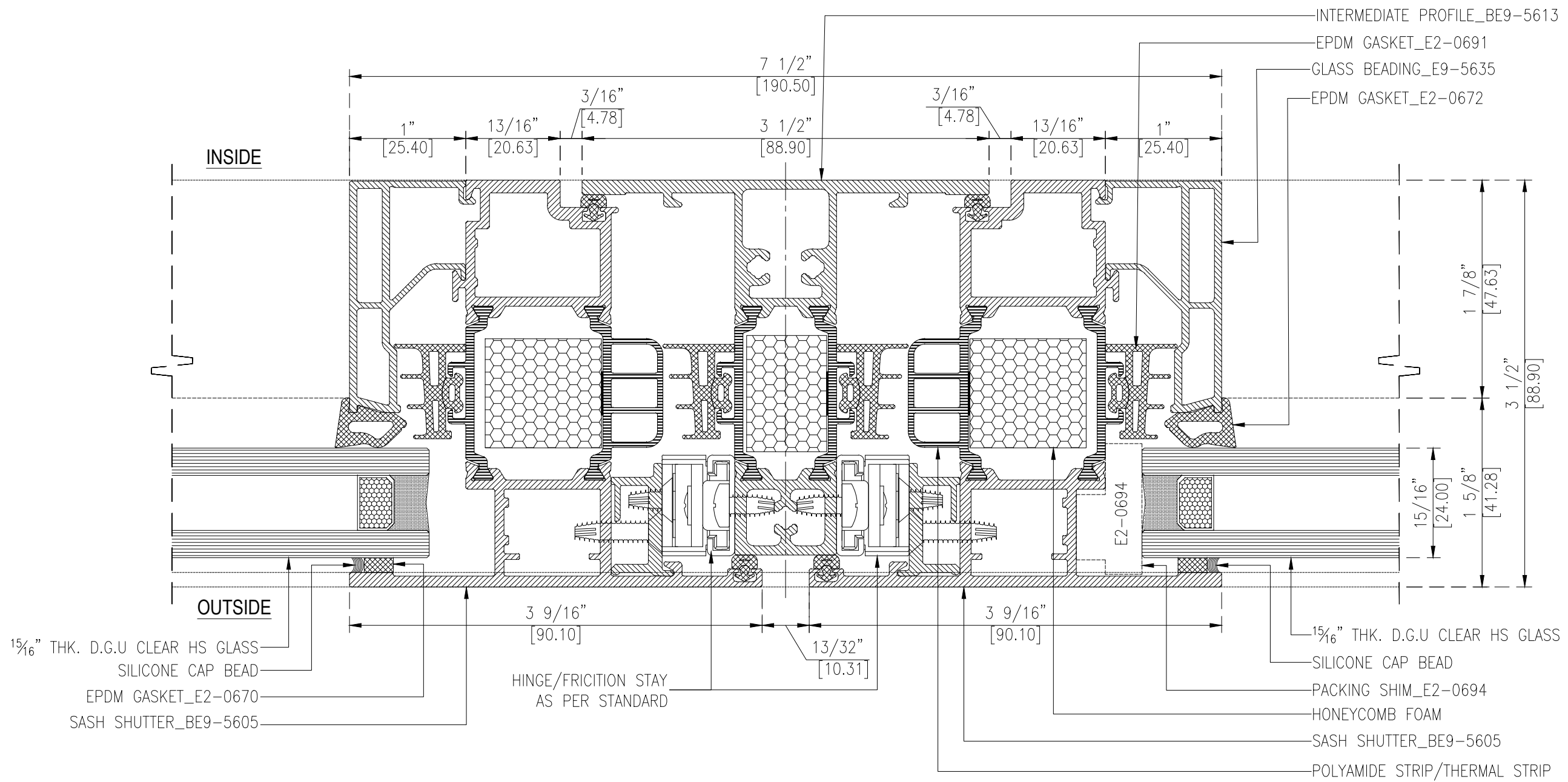
DRAWING TITLE:

DETAIL-021

DRAWN: DINESH	CHECKED: RAJ.G	APPROVED: RAJ.G	PAGE NO. 028	PR. CODE: 22308
DATE: 10 Dec, 19	DATE: -	DATE: -	SHEET NO. 28 OF 29	SCALE: AS SHOWN
DRAWING NUMBER: UNC/SCH-SIMSONA-AL-DWG-DT-0421				REV: 00

STATUS: SAMPLE DRAWING

DT-021 DETAIL:
 0306 & 0307 SCALE: 1:1



*GENERAL NOTES:
 1. ALL DIMENSION AND LEVELS ARE IN FEET INCH.
 2. ALL DIMENSIONS ARE TO BE READ NOT MEASURED.
 3. ALL ELEVATIONS VIEWED AS PER SHOWN.

REFERENCE DRAWINGS:

---	---	---
---	---	---
---	---	---
---	---	---
---	---	---
---	---	---
---	---	---
---	---	---
---	---	---
---	---	---
---	---	---

DESIGN DRAWING NO. REV. NO. DATE:

FACADE CONSULTANT:
JOSEPH B. CALLAGHAN, INC.
 1617 John F. Kennedy Blvd
 Suite 1655
 Philadelphia, PA 19103
 T: 215.665.0497

ARCHITECT DESIGN CONSULTANT:
KSS ARCHITECTS
 Princeton | Philadelphia
 337 Witherspoon Street
 Princeton, NJ 08542
 T: 609.921.1131

PROJECT:
UNCOMMON SCHOOL
 ADDITION AND RENOVATION
 NORTH STAR ACADEMY-571 18TH AVENUE
 571 18TH AVENUE, NEWARK, NJ 07103
 LOT 1, BLOCKS 358-359

CLIENT:
 --

ISSUE

---	---	---	---
---	---	---	---
---	---	---	---
---	---	---	---
---	---	---	---
---	---	---	---
---	---	---	---
---	---	---	---
---	---	---	---
---	---	---	---
---	---	---	---

NO. DESCRIPTION: DATE: REV.BY

DISCIPLINE:

FACADE CONTRACTOR:
 **SIMSONA CORPORATION**
 2275 Research Boulevard
 Suite 500
 Rockville, MD 20850
 Office: 301-774-0880
 Cell: 301-408-8553, FAX: 301-260-0239
 E-mail: raj@simsona.com

DRAWING TITLE:
DETAIL-022

DRAWN:	CHECKED:	APPROVED:	PAGE NO.	PR. CODE:
DINESH	RAJ.G	RAJ.G	029	22308
DATE:	DATE:	DATE:	SHEET NO.	SCALE:
10 Dec,19	-	-	29 OF 29	AS SHOWN
DRAWING NUMBER:				REV:
UNC/SCH-SIMSONA-AL-DWG-DT-0422				00
STATUS: SAMPLE DRAWING				

DT-022
 0307

DETAIL:
 SCALE: 1:1