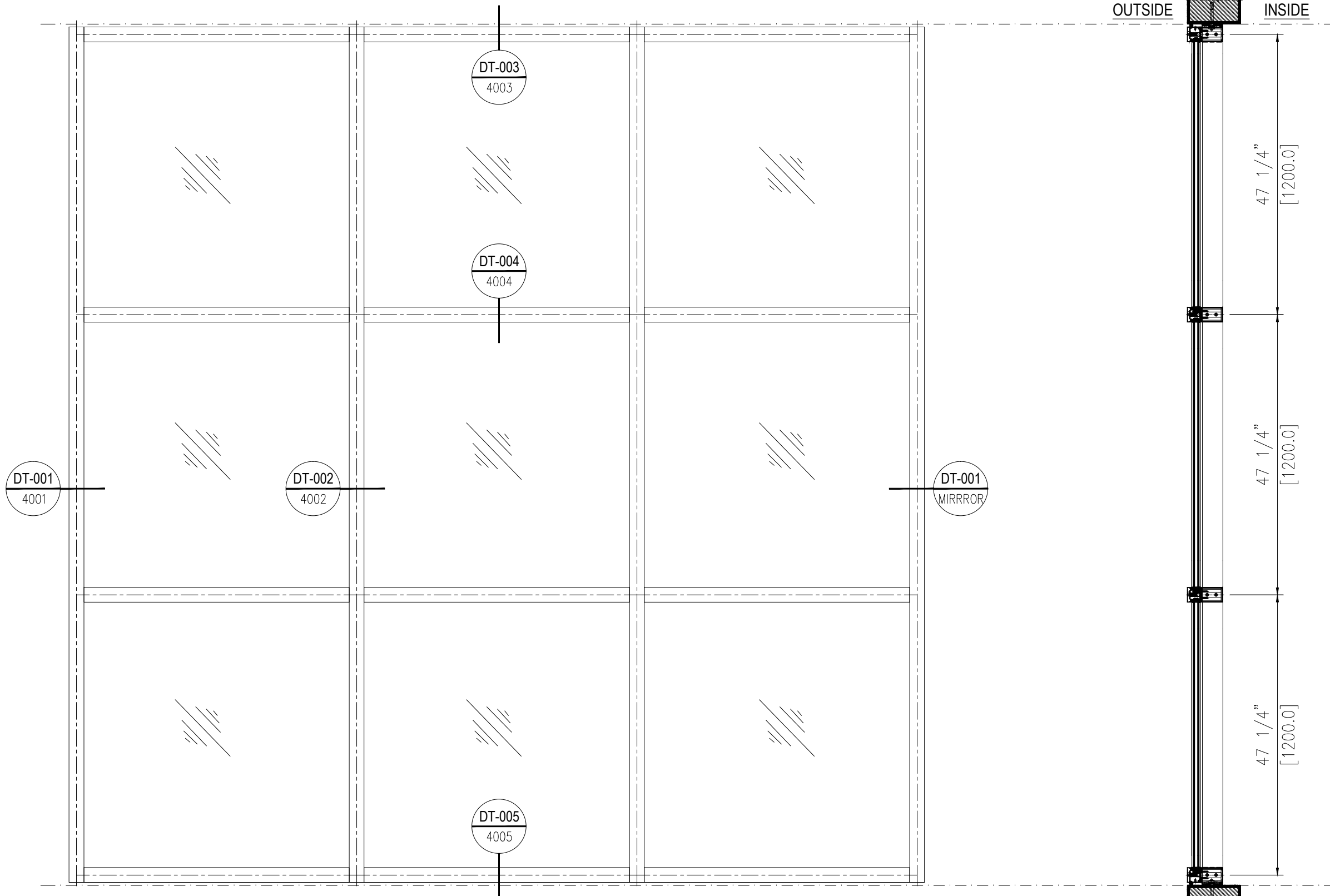


OUTSIDE INSIDE



DT-001
4001

DT-002
4002

DT-003
4003

DT-004
4004

DT-001
MIRROR

DT-005
4005

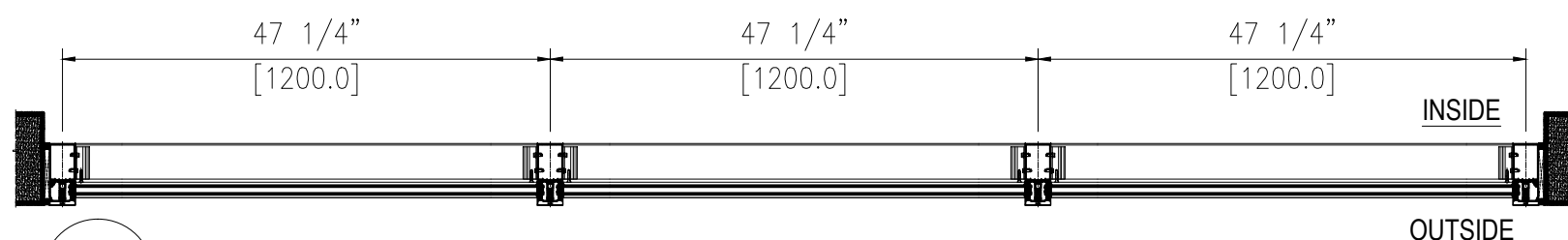
47 1/4" [1200.0]

47 1/4" [1200.0]

47 1/4" [1200.0]

CW-01 ELEVATION: (VIEW OUTSIDE)
SCALE 1:18

CW-01 SECTION:



CW-01 PLAN:

- *GENERAL NOTES:
1. ALL DIMENSION AND LEVELS ARE IN FEET INCH.
 2. ALL DIMENSIONS ARE TO BE READ NOT MEASURED.
 3. ALL ELEVATIONS VIEWED AS PER SHOWN.

REFERENCE DRAWINGS:

—	—	—
—	—	—
—	—	—
—	—	—
—	—	—
—	—	—

DESIGN DRAWING NO. REV. NO. DATE:

FACADE CONSULTANT:
JOSEPH B. CALLAGHAN, INC.
1617 John F. Kennedy Blvd
Suite 1655
Philadelphia, PA 19103
T: 215.665.0497

ARCHITECT DESIGN CONSULTANT:
KSS ARCHITECTS
Princeton | Philadelphia
337 Witherspoon Street
Princeton, NJ 08542
T: 609.921.1131

PROJECT:
UNCOMMON SCHOOL
ADDITION AND RENOVATION
NORTH STAR ACADEMY-571 18TH AVENUE
571 18TH AVENUE, NEWARK, NJ 07103
LOT 1, BLOCKS 358-359

CLIENT:
—

ISSUE

—	—	—
—	—	—
—	—	—
—	—	—
—	—	—
—	—	—
—	—	—
—	—	—
—	—	—
—	—	—

NO.	DESCRIPTION:	DATE:	REV.BY

DISCIPLINE:

FACADE CONTRACTOR:
SIMSONA CORPORATION
2275 Research Boulevard
Suite 500
Rockville, MD 20850
Office: 301-774-0880
Cell: 301-408-8553, FAX: 301-260-0239
E-mail: raj@simsona.com

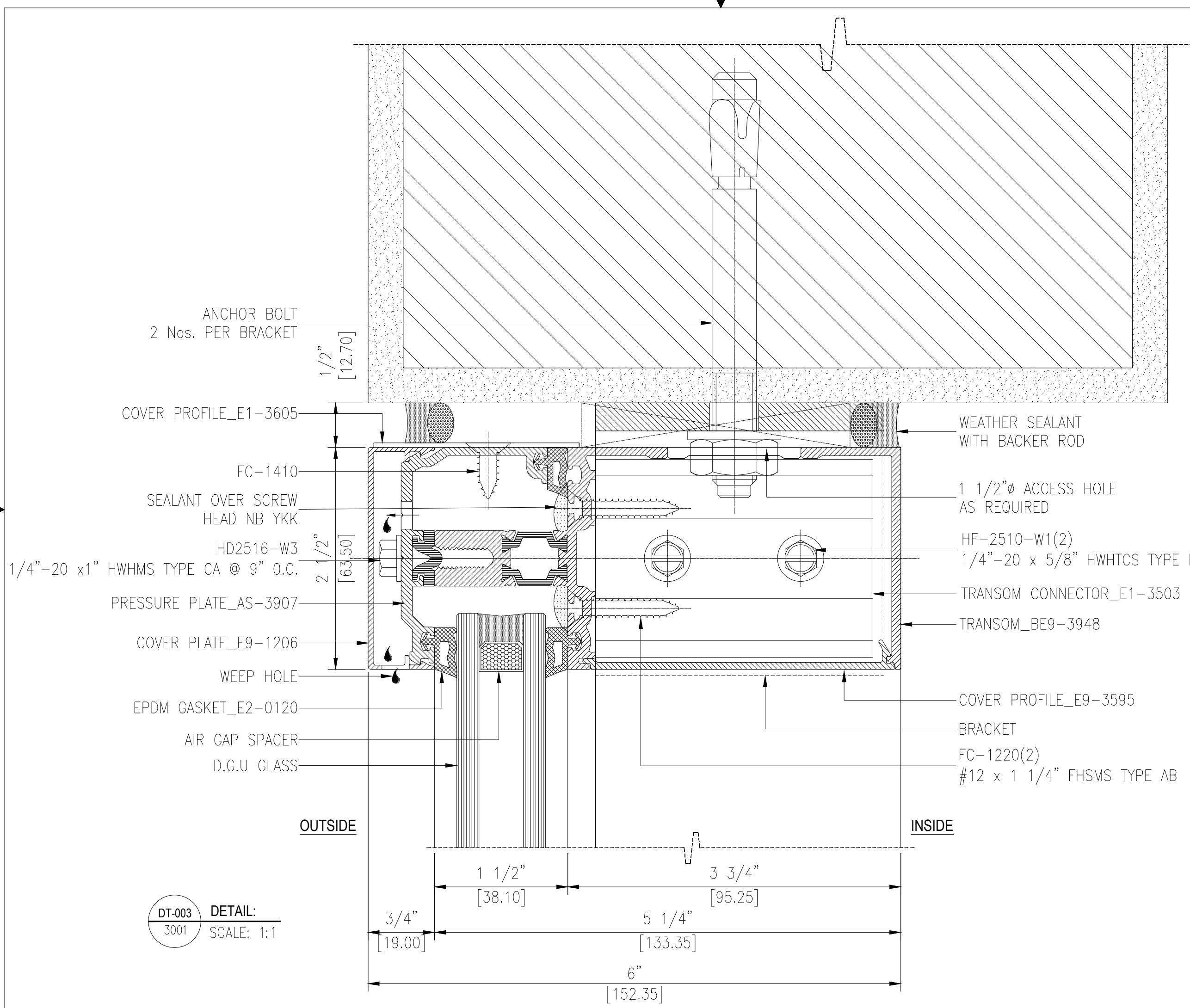
DRAWING TITLE:

SHOP DRAWING OF CURTAIN WALL GLAZING

DRAWN:	CHECKED:	APPROVED:	PAGE NO.	PR. CODE:	
DINESH	RAJ.G	RAJ.G	001	22308	
DATE:	DATE:	DATE:	SHEET NO.	SCALE:	SIZE:
10 Dec,19	—	—	1 OF 6	AS SHOWN	A3

DRAWING NUMBER:
UNC/SCH-SIMSONA-AL-DWG-CW-GL-3001

STATUS: SAMPLE DRAWING



DT-003
3001

DETAIL:
SCALE: 1:1

*GENERAL NOTES:
1. ALL DIMENSION AND LEVELS ARE IN FEET INCH.
2. ALL DIMENSIONS ARE TO BE READ NOT MEASURED.
3. ALL ELEVATIONS VIEWED AS PER SHOWN.

REFERENCE DRAWINGS:

---	---	---
---	---	---
---	---	---
---	---	---
---	---	---
---	---	---
---	---	---

DESIGN DRAWING NO. REV. NO. DATE:

FACADE CONSULTANT:
JOSEPH B. CALLAGHAN, INC.
1617 John F. Kennedy Blvd
Suite 1655
Philadelphia, PA 19103
T: 215.665.0497

ARCHITECT DESIGN CONSULTANT:
KSS ARCHITECTS
Princeton | Philadelphia
337 Witherspoon Street
Princeton, NJ 08542
T: 609.921.1131

PROJECT:
UNCOMMON SCHOOL
ADDITION AND RENOVATION
NORTH STAR ACADEMY-571 18TH AVENUE
571 18TH AVENUE, NEWARK, NJ 07103
LOT 1, BLOCKS 358-359

CLIENT:

ISSUE

---	---	---	---
---	---	---	---
---	---	---	---
---	---	---	---
---	---	---	---
---	---	---	---
---	---	---	---
---	---	---	---
---	---	---	---
---	---	---	---

NO. DESCRIPTION: DATE: REV.BY

DISCIPLINE:
FACADE CONTRACTOR:
SIMSONA CORPORATION
2275 Research Boulevard
Suite 500
Rockville, MD 20850
Office: 301-774-0880
Cell: 301-408-8553, FAX: 301-260-0239
E-mail: raj@simsona.com

DRAWING TITLE:
DETAIL-003

DRAWN:	CHECKED:	APPROVED:	PAGE NO.	PR. CODE:	
DINESH	RAJ.G	RAJ.G	004	22308	
DATE:	DATE:	DATE:	SHEET NO.	SCALE:	SIZE:
10 Dec,19	-	-	4 OF 6	AS SHOWN	A3

DRAWING NUMBER:
UNC/SCH-SIMSONA-AL-DWG-GL-DT-4003

REV: 00

STATUS: SAMPLE DRAWING

